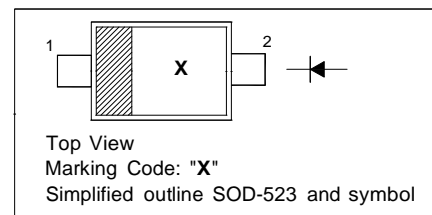


SILICON EPITAXIAL PLANAR SCHOTTKY BARRIER DIODE

for high speed switching circuit and small current
rectification applications

PINNING

PIN	DESCRIPTION
1	Cathode
2	Anode

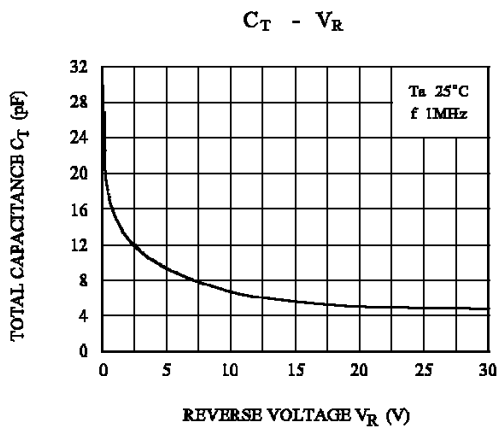
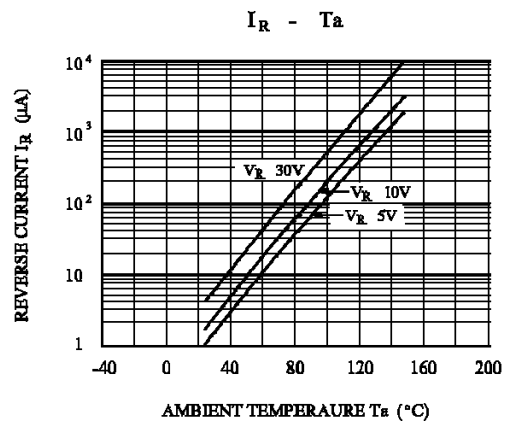
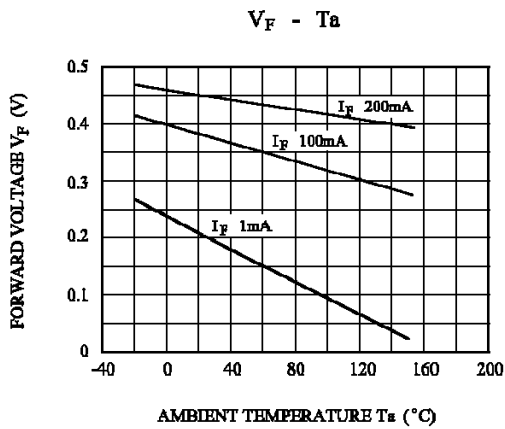
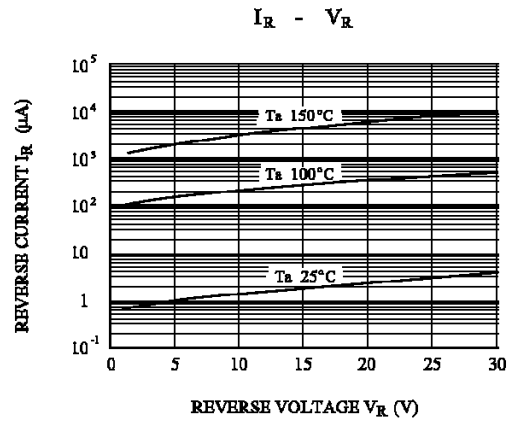
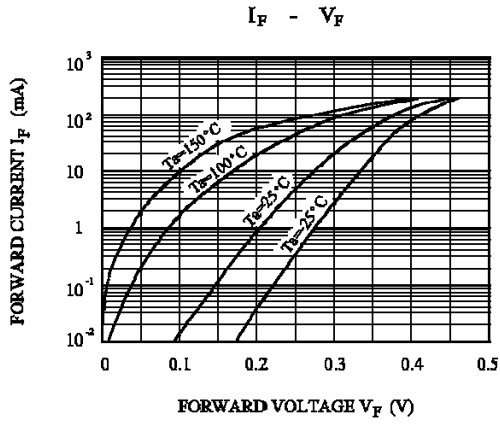


Absolute Maximum Ratings ($T_a = 25\text{ }^\circ\text{C}$)

Parameter	Symbol	Value	Unit
Reverse Voltage	V_R	30	V
Average Forward Current	I_O	200	mA
Non-repetitive Peak Forward Surge Current	I_{FSM}	1	A
Junction Temperature	T_j	125	$^\circ\text{C}$
Storage Temperature Range	T_{stg}	- 40 to + 125	$^\circ\text{C}$

Characteristics at $T_a = 25\text{ }^\circ\text{C}$

Parameter	Symbol	Max.	Unit
Forward Voltage at $I_F = 200\text{ mA}$	V_F	0.5	V
Reverse Current at $V_R = 10\text{ V}$	I_R	30	μA





CHINA BASE
INTERNATIONAL

SOD-523

SDB720WT

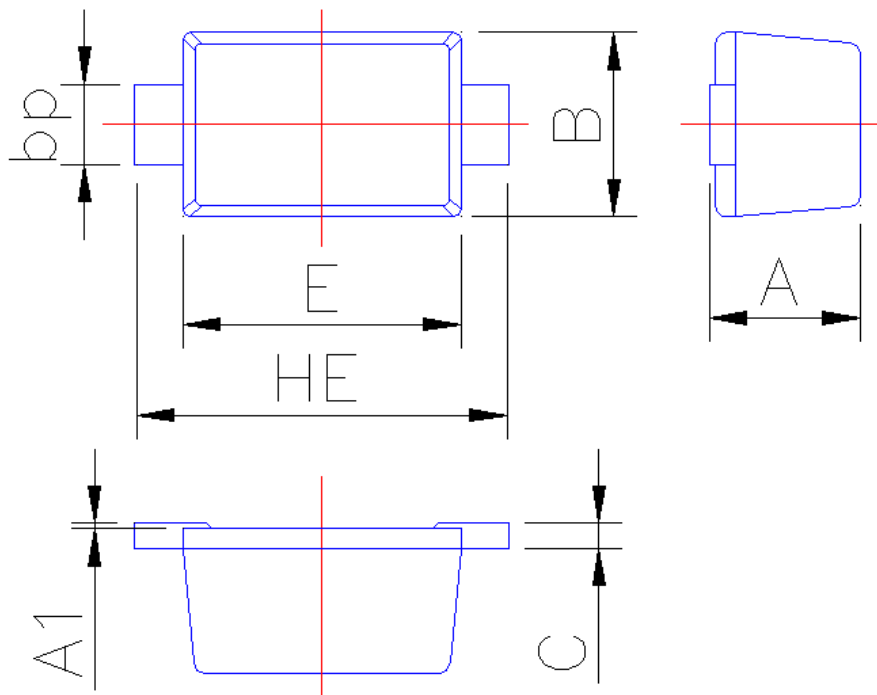


www.china-base.com.hk

PACKAGE OUTLINE

Plastic surface mounted package; 2 leads

SOD-523



Symbol	Dimension in Millimeters	
	Min	Max
A	0.60	0.70
A1	0	0.05
B	0.75	0.85
bp	0.25	0.40
C	0.09	0.15
E	1.15	1.25
HE	1.50	1.70